

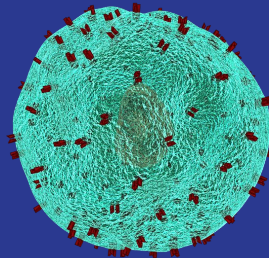
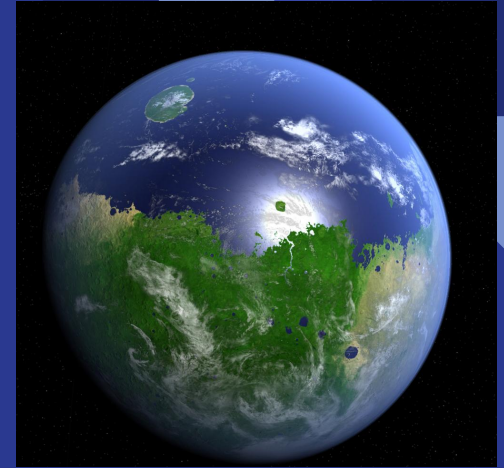
# LEAPES

## Parent Information Meeting

Living Environment (BIO)

+

AP Environmental Science



*What is LEAPES?*

*An opportunity for select  
POBJFKHS students to  
pursue and experience as  
many Advanced Placement  
Science courses during  
their high school career.*



# Selection Criteria

- ❑ Enrolled in accelerated Earth Science AND Algebra 1 or Geometry
- ❑ Test Average above 95% in Accelerated Earth Science
- ❑ Test Average above 95% in Accelerated Algebra 1
- ❑ Grade Average “A” in 8th grade English
- ❑ *NO* Outstanding homework/ classwork/labs
- ❑ Teacher Recommendation
- ❑ Guidance Counselor Approval
- ❑ Parental Approval
- ❑ Inner maturity to handle rigorous coursework

## Comparison of LE Honors and AP-ES Curricula

### Pre-AP Biology

Protein Synthesis  
Genetics  
Human Physiology  
Comparative Physiology  
Cell Theory

Evolution  
Biodiversity  
Energy Flow  
Nutrient Recycling  
Photosynthesis  
Respiration  
Human Impact on  
Environment

### AP Environmental Science

Land Use  
Soil Dynamics  
Resource  
Consumption  
Energy Conservation  
Earth Science  
Concepts



# Overview

- ❖ Combined curricula of Pre-AP Biology and AP Environmental Science
- ❖ Meets everyday with a double period every other day

## Culminating Assessments

- ❑ May 2025 - AP Environmental Science End of Course Exam
- ❑ June 2025 - New Biology Regents

# Course Expectations

- ❖ Complete **required** summer assignment
- ❖ Participation in class discussion, case studies, homework, projects, individual & group presentations
- ❖ Perform laboratory activities to satisfy both NYSED Biology standards & College Board AP Environmental Science curricula
- ❖ Complete assignments such as data analysis, textbook readings, current events, and other studies in a timely manner

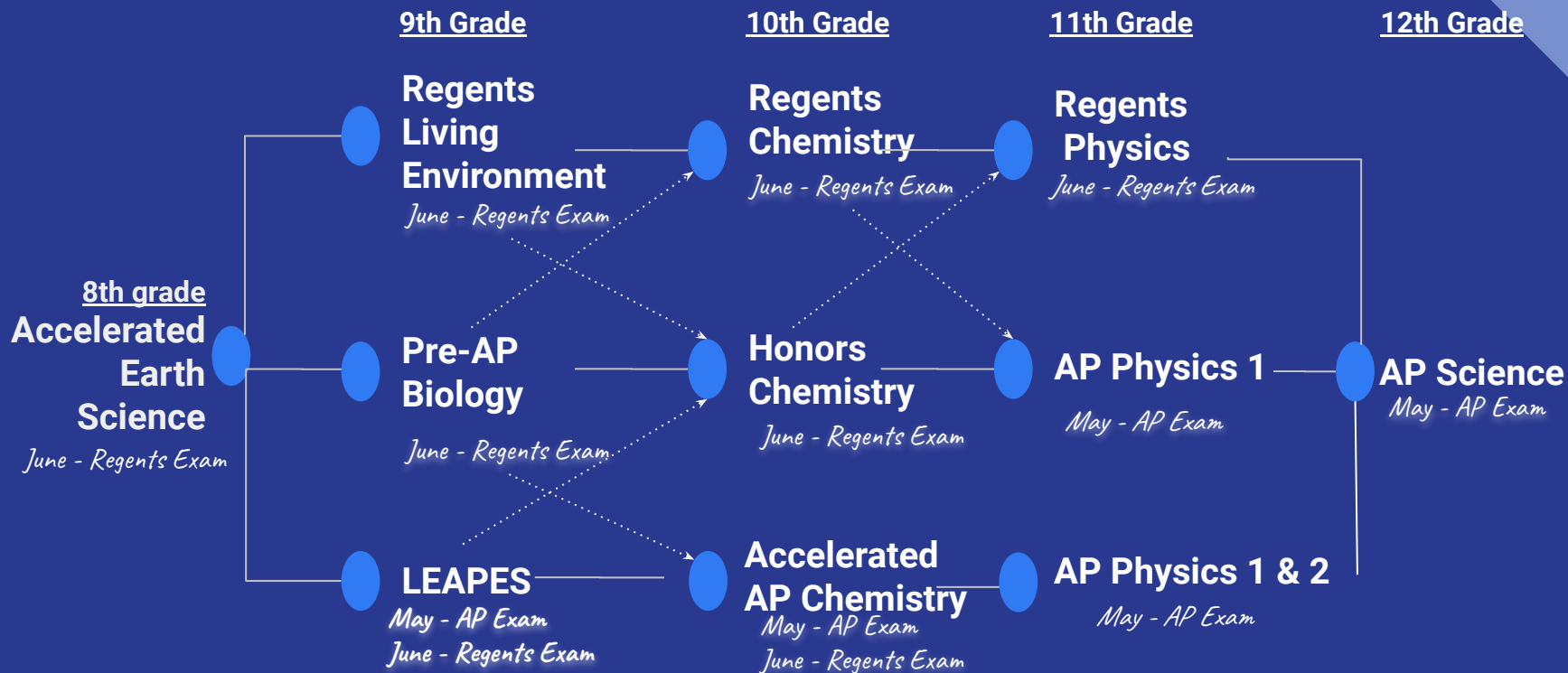
Strong Work Ethic

Responsible

Motivated

Able to Multitask

# Probable Sequence



# Questions?



Joyce Thornton Barry  
Science, Research and Technology Chair K-12  
516-434-3138

[jbarry@pobschools.org](mailto:jbarry@pobschools.org)